

**AAXE  
AG**

**E-Katalog für  
alle Kunden**





### **Laminated Particle Board**

Particleboard is a composite panel product consisting of cellulosic particles of various sizes that are bonded together with a synthetic resin or binder under heat and pressure. Particle geometry, resin levels, board density and manufacturing processes may be modified to produce products suitable for specific end uses. At the time of manufacture, additives can be incorporated to impart specific performance enhancements including greater dimensional stability, increased fire retardancy and moisture resistance.

Today's particleboard gives industrial users the consistent quality and design flexibility needed for fast, efficient production lines and quality consumer products. Particleboard panels are manufactured in a variety of dimensions and with a wide range of physical properties that provides maximum design flexibility for specifiers and end users.



### **Medium Density Fiberboard (MDF)**

Medium Density Fiberboard (MDF) panels are manufactured with various physical properties and dimensions, providing the opportunity to design the end product with the specific MDF needed. MDF is a composite panel product typically consisting of cellulosic fibers combined with a synthetic resin or other suitable bonding system and joined together under heat and pressure. Additives may be introduced during manufacturing to impart additional characteristics. The surface is flat, smooth, uniform, dense, and free of knots and grain patterns. The homogeneous density profile of these panels allows intricate and precise machining and finishing techniques for superior finished MDF products.

Trim waste is significantly reduced when using MDF compared to other substrates. Stability and strength are important assets of MDF, which can be machined into complex patterns that require precise tolerances. Because MDF is a type of unfinished composite panel made from residual wood fiber, such as chips and shavings, it is carefully value-engineered for each application. This results in product solutions that are substantially less expensive than alternatives.

Medium Density Fiberboard Panels (MDF) are widely used to manufacture kitchen cabinets. They are well suited for the residential construction of modern homes where cabinets and built-ins beautifully showcase the performance of MDF. It is the material of choice in home interiors where tight tolerances, smooth surfaces, and intricate machining are critical.

Interior trim and mouldings are easily machined and laminated or painted. MDF can be machined with extremely tight tolerances and is used frequently in interior trims.



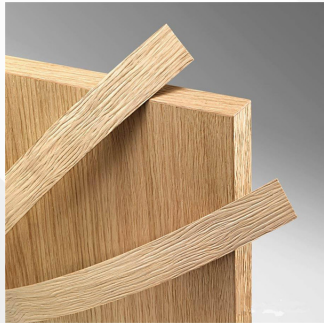


## Multiplex board Board

Multiplex board normally refers to a specific type of plywood product which is of at least five layers of veneer or ply of the same thickness, ranging from 0.8 – 2.5 mm thick. The timber used for these types of plywood tend to be single or multiple species beech, maple, birch or spruce, overall thicknesses can range from 4mm to 150mm, with thicker products tending to have better fire ratings. Depending on the glues used, class and grade it can be used internally or externally.

The sheets consists of the face (the surface that is visible after installation), the back, and the core (which lies between the face and the back). The plies are glued together normally using a strong adhesive, usually a phenol or urea formaldehyde resin, however increasingly different products might be available that use alternative natural polymer glues with reduced environmental impacts.

Each layer of ply is oriented with its wood grain perpendicular to the adjacent layer, rotated up to 90-degrees to one another. This is called 'cross-graining' and it is this that distinguishes plywood from laminated veneer lumber (LVL). In LVL, the direction of the plies is the same, whereas in plywood, the direction of the plies alternates. It is usual to have an odd number of plies so that the sheet is balanced and this helps to reduce warping.



## ABS Edge Banding

ABS edging has been on the market for about 20 years, slowly taking the place of PVC in the furniture and woodworking industries. The rise in popularity was driven by companies and manufacturers becoming more aware of their environmental impact, and the need to find more ecologically friendly alternatives to products and processes.

ABS is a high grade thermoplastic that's very resistant to everyday knocks and scrapes, so it's great for furniture in high-traffic areas. It can withstand water, is highly heat resistant, and isn't damaged by domestic cleaning products making it perfect for family kitchens. It's also a great material for use in offices, bathrooms, all interior furnishings, shop fitting and coffin manufacturing, even for exhibition stands . Its high level of heat resistance means it can be used on kitchen cabinets next to hot ovens or hobs without damage or distortion. As an edging, ABS is very flexible, giving almost unlimited application options. Whether straight edge boards, curves, or custom shapes, you can mould this material to fit your design aesthetic. It's also relatively easy to process on edge banding machines.

ABS is lighter in composition and density than PVC but still provides an incredibly durable surface to protect your board edges. It offers some of the same positives as PVC, with the added bonus of being fully recyclable and biodegradable.

## HÄFELE | Accessorie

**HÄFELE**

Häfele is an experienced specialist for intelligent hardware and fitting systems, lighting and electronic access control systems. The company's history goes back to the year 1923 in Germany, where everything started and developed rapidly – and globally. Today, customers from more than 150 countries around the world rely on Häfele's expertise. 8,000 employees and 38 foreign sales companies along with numerous other representatives around the world make Häfele the global player it has become. Despite a strong international focus and worldwide networking, Häfele has always been rooted locally, which is demonstrated in its distinct regional presence. This benefits our customers, not least in the form of individual and personal support.

### Our claim

High quality standards, customer proximity and lived values are our formula for satisfied customers and relationships built on trust. Our long company history also reveals how Häfele has always evolved as times change. "Thinking ahead" and customer orientation have become part of the Häfele DNA and what we expect of ourselves.

### Our customers

Häfele serves various customer segments with its wide range of over 150,000 articles, numerous innovative in-house product developments and versatile services. Häfele's customer spectrum includes joiner/cabinet maker customers as well as customers from industry, dealers and even major construction project customers who benefit from Häfele's 360° comprehensive project solutions. In Germany, the offer is aimed at tradespeople. Private customers can contact a Häfele joinery / carpentry partner they trust or a Häfele Partner Shop in the vicinity.





# HEWI

## HEWI | Accessorie

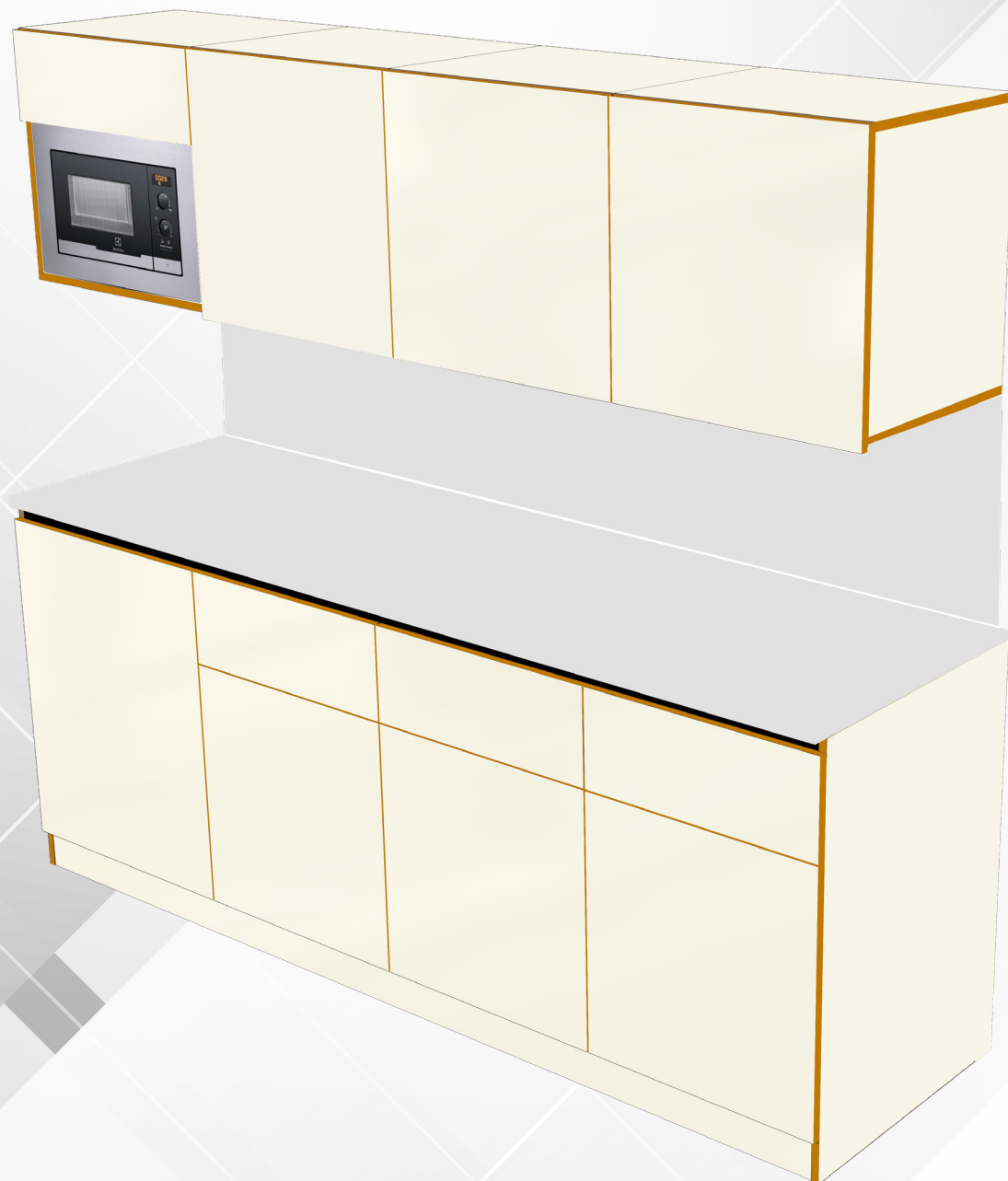
The legendary design school of modernism continues to have a powerful effect even today. This can be seen in HEWI's design language which is entirely in the tradition of the Bauhaus design maxim. This formal language of contemporary and timeless design, reduced to the essentials and its conscious use of colour, closely link HEWI with the Bauhaus movement. The constant search for new design paths is entirely characteristic of HEWI's design philosophy. The result is surprisingly innovative solutions that go far beyond conventional approaches.

Since its foundation in 1929, HEWI has evolved to become a system provider for comprehensive solutions in the areas of building hardware, sanitary accessories and accessible products. This evolution has been entirely organic as society has and continues to change, and with it the demands on architecture and product design.

By adhering to the fundamental principles of universal design and a sustainable, holistic design philosophy, HEWI has focused on the individual needs of people for more than 90 years. Countless awards underline the company's pioneering role, including the Universal Design award "Best of Decade", which HEWI received for outstanding achievements in the field of universal design, Architects' Darling, the German Design Awards and last but not least the Iconic Awards. These awards are not merely an appreciation of HEWI's commitment to the past, they also serve as an incentive to continue to move forward and develop even more innovative solutions.

We take great pride in our decades of experience, constant innovation, our in-depth understanding of shape, colour and materials, as well as impeccable product development, that has always kept people's requirements in mind. It is this that has made HEWI not only the market leader in accessibility, but the acknowledged expert in system design.





Design Code: DAAXE-0004

Material: Laminated Particle Board

ABS Edge Banding

Accessories: Hafele, Hewi

Can be produced according to the customer's need

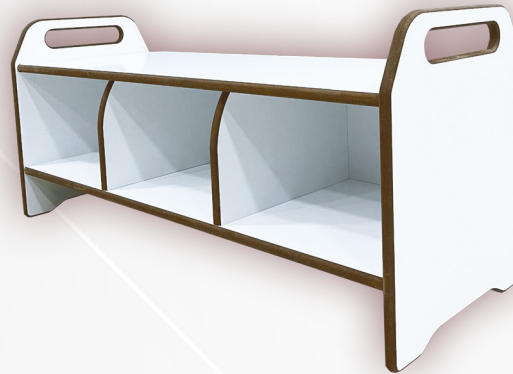
**Dimensions: W2362xL2110xD600/482mm**





Design Code: DAAXE-0005  
Material: Wood  
Can be produced according to the customer's need

**Dimensions: W360xL600xD330 mm**



Design Code: DAAXE-0006  
Material: MDF  
Can be produced according to the customer's need

**Dimensions: W1050xL485xD400 mm**



Design Code: DAAXE-0007  
Material: MDF  
Can be produced according to the customer's need

**Dimensions: W900xL425xD400 mm**



Design Code: DAAXE-0008  
Material: MDF  
Can be produced according to the customer's need

**Dimensions: W660xL755xD420 mm**



Design Code: DAAXE-0009  
Material: MDF  
Can be produced according to the customer's need

**Dimensions: W760xL965xD390 mm**



Design Code: DAAXE-0010  
Material: MDF  
Can be produced according to the customer's need

**Dimensions: W450xL675xD450 mm**





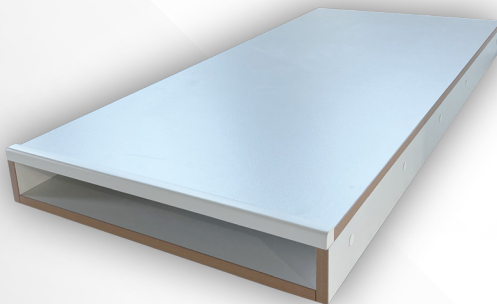
Design Code: DAAXE-0011  
 Material: Laminated Particle Board  
 ABS Edge Banding  
 Hafele Accessories  
 Key: Hafele  
 Can be produced according to the customer's need

**Dimensions: W850xL2000xD600 mm**



Design Code: DAAXE-0012  
 Material: Laminated Particle Board  
 ABS: Buche  
 Accessories: Hafele  
 Mirror: Foil protect  
 Can be produced according to the customer's need

**Dimensions: W1000xL2000xD600 mm**

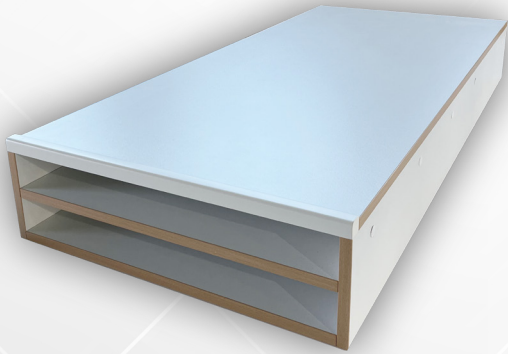


Design Code: DAAXE-0013  
 Material: Laminated Particle Board  
 ABS: Buche  
 Front cover: MDF  
 Can be produced according to the customer's need

**Dimensions: W657xL107xD1430 mm**

Design Code: DAAXE-0014  
Material: Laminated Particle Board  
ABS Edge Banding  
Front cover: MDF  
Can be produced according to the customer's need

**Dimensions: W657xL196xD1430 mm**



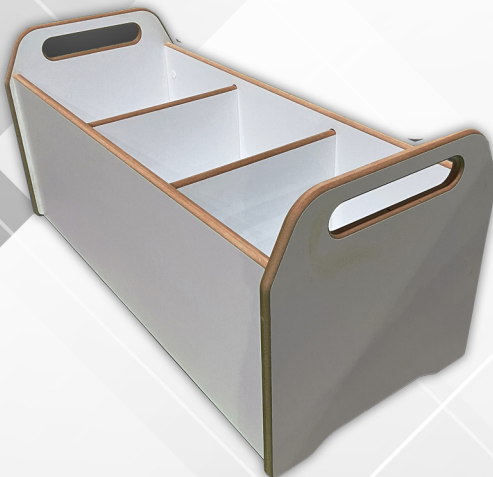
Design Code: DAAXE-0015  
Material: MDF  
Can be produced according to the customer's need

**Dimensions: W410xL910xD410 mm**



Design Code: DAAXE-0016  
Material: MDF  
Can be produced according to the customer's need

**Dimensions: W900xL420xD400 mm**







Design Code: DAAXE-0017  
Material: Textile  
Can be produced according to the customer's need

**Dimensions: W480xL350xD250 mm**



Design Code: DAAXE-0017L  
Material: Textile  
Can be produced according to the customer's need

**Dimensions: W960xL350xD250 mm**



Design Code: DAAXE-0018  
Material: MDF  
Can be produced according to the customer's need

**Dimensions: W600xL900xD410 mm**



Design Code: DAAXE-0019  
Material: MDF  
Can be produced according to the customer's need

**Dimensions: W1200xL900xD410 mm**



Design Code: DAAXE-0020  
Material: MDF  
Can be produced according to the customer's need

**Dimensions: W1200xL639xD400 mm**



Design Code: DAAXE-0021  
Material: MDF  
Can be produced according to the customer's need

**Dimensions: W393xL639xD400 mm**



Design Code: DAAXE-0022  
Material: MDF  
Can be produced according to the customer's need

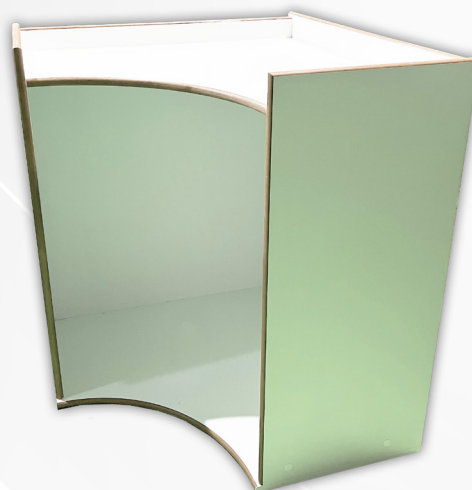
**Dimensions: W393xL900xD400 mm**





Design Code: DAAXE-0023  
Material: MDF  
Can be produced according to the customer's need

**Dimensions: W1200xL570xD400 mm**



Design Code: DAAXE-0024  
Material: MDF  
Can be produced according to the customer's need

**Dimensions: W790xL900xD795 mm**



Design Code: DAAXE-0025  
Material: MDF  
Can be produced according to the customer's need

**Dimensions: W1200xL900xD400 mm**



Design Code: DAAXE-0026

Material: MDF

Can be produced according to the customer's need

**Dimensions: W1200xL900xD400 mm**



Design Code: DAAXE- SETOF (0020, 0021 0022, 0023, 0024, 0025, 0026)

Material: MDF

Can be produced according to the customer's need

**Dimensions: W7216xL900/639xD400 mm**



Design Code: DAAXE-0027  
 Material: Laminated Particle Board, MDF, Multiplex  
 ABS Edge Banding  
 Can be produced according to the customer's need

**Dimensions: Customer's need**



Design Code: DAAXE-0028  
 Material: Laminated Particle Board, MDF, Multiplex  
 ABS Edge Banding  
 Can be produced according to the customer's need

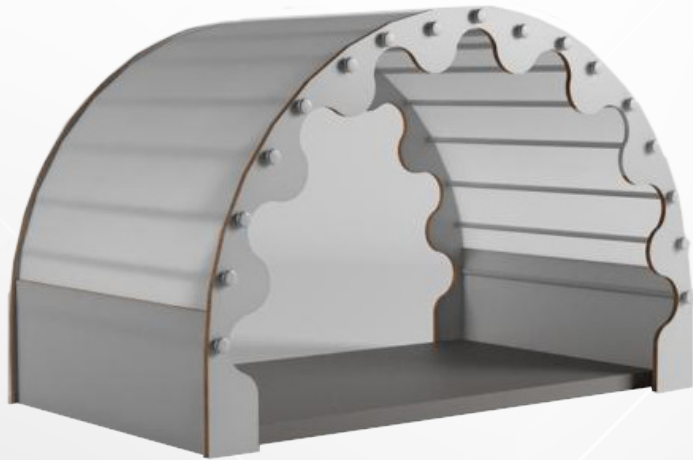
**Dimensions: Customer's need**



Design Code: DAAXE-0029  
 Material: Laminated Particle Board, MDF, Multiplex  
 ABS Edge Banding  
 Can be produced according to the customer's need

**Dimensions: Customer's need**





Design Code: DAAXE-0030

Material: Laminated Particle Board, MDF, Multiplex

ABS Edge Banding

Can be produced according to the customer's need

**Dimensions: Customer's need**



Design Code: DAAXE-0031

Material: Laminated Particle Board, MDF, Multiplex

ABS Edge Banding

Can be produced according to the customer's need

**Dimensions: Customer's need**



Design Code: DAAXE-0032

Material: Laminated Particle Board, MDF, Multiplex

ABS Edge Banding

Can be produced according to the customer's need

**Dimensions: Customer's need**



Design Code: DAAXE-0033  
 Material: Laminated Particle Board, MDF, Multiplex  
 ABS Edge Banding  
 Can be produced according to the customer's need

**Dimensions: Customer's need**



Design Code: DAAXE-0034  
 Material: Laminated Particle Board, MDF, Multiplex  
 ABS Edge Banding  
 Can be produced according to the customer's need

**Dimensions: Customer's need**



Design Code: DAAXE-0035  
 Material: Laminated Particle Board, MDF, Multiplex  
 ABS Edge Banding  
 Can be produced according to the customer's need

**Dimensions: Customer's need**



Design Code: DAAXE-0036

Material: Laminated Particle Board, MDF, Multiplex

ABS Edge Banding

Can be produced according to the customer's need

**Dimensions: Customer's need**





Design Code: DAAXE-0037

Material: Laminated Particle Board, MDF, Multiplex

ABS Edge Banding

Can be produced according to the customer's need

**Dimensions: Customer's need**



Design Code: DAAXE-0038

Material: Laminated Particle Board, MDF, Multiplex

ABS Edge Banding

Can be produced according to the customer's need

**Dimensions: Customer's need**



Design Code: DAAXE-0039

Material: Laminated Particle Board, MDF, Multiplex

ABS Edge Banding

Can be produced according to the customer's need

**Dimensions: Customer's need**



Design Code: DAAXE-0040

Material: Laminated Particle Board, MDF, Multiplex

ABS Edge Banding

Can be produced according to the customer's need

**Dimensions: Customer's need**



Design Code: DAAXE-0041  
Material: Laminated Particle Board, MDF, Multiplex  
ABS Edge Banding  
Can be produced according to the customer's need

**Dimensions: Customer's need**



Design Code: DAAXE-0042  
Material: Laminated Particle Board, MDF, Multiplex  
ABS Edge Banding  
Can be produced according to the customer's need

**Dimensions: Customer's need**



Design Code: DAAXE-0043  
Material: Laminated Particle Board, MDF, Multiplex  
ABS Edge Banding  
Can be produced according to the customer's need

**Dimensions: Customer's need**





Design Code: DAAXE-0044

Material: Laminated Particle Board, MDF, Multiplex

ABS Edge Banding

Can be produced according to the customer's need

**Dimensions: Customer's need**



Design Code: DAAXE-0045

Material: Laminated Particle Board, MDF, Multiplex

ABS Edge Banding

Can be produced according to the customer's need

**Dimensions: Customer's need**



Design Code: DAAXE-0046

Material: Laminated Particle Board, MDF, Multiplex

ABS Edge Banding

Can be produced according to the customer's need

**Dimensions: Customer's need**



Design Code: DAAXE-0047  
 Material: Laminated Particle Board, MDF, Multiplex  
 ABS Edge Banding  
 Can be produced according to the customer's need

**Dimensions: Customer's need**



Design Code: DAAXE-0048  
 Material: Laminated Particle Board, MDF, Multiplex  
 ABS Edge Banding  
 Can be produced according to the customer's need

**Dimensions: Customer's need**



Design Code: DAAXE-0049  
 Material: Laminated Particle Board, MDF, Multiplex  
 ABS Edge Banding  
 Can be produced according to the customer's need

**Dimensions: Customer's need**



Design Code: DAAXE-0050

Material: Laminated Particle Board, MDF, Multiplex

ABS Edge Banding

Can be produced according to the customer's need

**Dimensions: Customer's need**



Design Code: DAAXE-0051

Material: Laminated Particle Board, MDF, Multiplex

ABS Edge Banding

Can be produced according to the customer's need

**Dimensions: Customer's need**



Design Code: DAAXE-052

Material: Laminated Particle Board, MDF, Multiplex

ABS Edge Banding

Can be produced according to the customer's need

**Dimensions: Customer's need**





Design Code: DAAXE-053

Material: Laminated Particle Board, MDF, Multiplex

ABS Edge Banding

Can be produced according to the customer's need

**Dimensions: Customer's need**



Design Code: DAAXE-0054  
Material: Laminated Particle Board, MDF, Multiplex  
ABS Edge Banding  
Can be produced according to the customer's need

**Dimensions: Customer's need**



Design Code: DAAXE-0055  
Material: Laminated Particle Board, MDF, Multiplex  
ABS Edge Banding  
Can be produced according to the customer's need

**Dimensions: Customer's need**



Design Code: DAAXE-056  
Material: Laminated Particle Board, MDF, Multiplex  
ABS Edge Banding  
Can be produced according to the customer's need

**Dimensions: Customer's need**



Design Code: DAAXE-0057

Material: Laminated Particle Board, MDF, Multiplex

ABS Edge Banding

Can be produced according to the customer's need

**Dimensions: Customer's need**





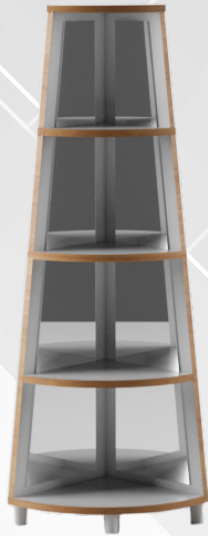
Design Code: DAAXE-0058

Material: Laminated Particle Board, MDF, Multiplex

ABS Edge Banding

Can be produced according to the customer's need

**Dimensions: Customer's need**



Design Code: DAAXE-0059  
Material: Laminated Particle Board, MDF, Multiplex  
ABS Edge Banding  
Can be produced according to the customer's need

**Dimensions: Customer's need**



Design Code: DAAXE-0060  
Material: Laminated Particle Board, MDF, Multiplex  
ABS Edge Banding  
Can be produced according to the customer's need

**Dimensions: Customer's need**



Design Code: DAAXE-0061  
Material: Laminated Particle Board, MDF, Multiplex  
ABS Edge Banding  
Can be produced according to the customer's need

**Dimensions: Customer's need**



Design Code: DAAXE-0062

Material: Laminated Particle Board, MDF, Multiplex

ABS Edge Banding

Can be produced according to the customer's need

**Dimensions: Customer's need**



Design Code: DAAXE-0063

Material: Laminated Particle Board, MDF, Multiplex

ABS Edge Banding

Can be produced according to the customer's need

**Dimensions: Customer's need**





Design Code: DAAXE-0064

Material: Laminated Particle Board, MDF, Multiplex

ABS Edge Banding

Can be produced according to the customer's need

**Dimensions: Customer's need**



Design Code: DAAXE-0065

Material: Laminated Particle Board, MDF, Multiplex

ABS Edge Banding

Can be produced according to the customer's need

**Dimensions: Customer's need**



Design Code: DAAXE-0066

Material: Laminated Particle Board, MDF, Multiplex

ABS Edge Banding

Can be produced according to the customer's need

**Dimensions: Customer's need**



Design Code: DAAXE-0067

Material: Laminated Particle Board, MDF, Multiplex

ABS Edge Banding

Can be produced according to the customer's need

**Dimensions: Customer's need**





Design Code: DAAXE-0068

Material: Laminated Particle Board, MDF, Multiplex

ABS Edge Banding

Can be produced according to the customer's need

**Dimensions: Customer's need**

Design Code: DAAXE-0069

Material: Laminated Particle Board, MDF, Multiplex

ABS Edge Banding

Can be produced according to the customer's need

**Dimensions: Customer's need**





Design Code: DAAXE-0070

Material: Laminated Particle Board, MDF, Multiplex

ABS Edge Banding

Can be produced according to the customer's need

**Dimensions: Customer's need**



Design Code: DAAXE-007I

Material: Laminated Particle Board, MDF, Multiplex

ABS Edge Banding

Can be produced according to the customer's need

**Dimensions: Customer's need**



Design Code: DAAXE-0072

Material: Laminated Particle Board, MDF, Multiplex

ABS Edge Banding

Can be produced according to the customer's need

**Dimensions: Customer's need**

Design Code: DAAXE-0073

Material: Laminated Particle Board, MDF, Multiplex

ABS Edge Banding

Can be produced according to the customer's need

**Dimensions: Customer's need**







Design Code: DAAXE-0074

Material: Laminated Particle Board, MDF, Multiplex  
ABS Edge Banding

Can be produced according to the customer's need

**Dimensions: Customer's need**



Design Code: DAAXE-0075

Material: Laminated Particle Board, MDF, Multiplex

ABS Edge Banding

Can be produced according to the customer's need

**Dimensions: Customer's need**



Design Code: DAAXE-0076

Material: Laminated Particle Board, MDF, Multiplex

ABS Edge Banding

Can be produced according to the customer's need

**Dimensions: Customer's need**



Design Code: DAAXE-0077

Material: Laminated Particle Board, MDF, Multiplex

ABS Edge Banding

Can be produced according to the customer's need

**Dimensions: Customer's need**





Design Code: DAAXE-0078

Material: Laminated Particle Board, MDF, Multiplex

ABS Edge Banding

Can be produced according to the customer's need

**Dimensions: Customer's need**



Design Code: DAAXE-0079

Material: Laminated Particle Board, MDF, Multiplex

ABS Edge Banding

Can be produced according to the customer's need

**Dimensions: Customer's need**

Design Code: DAAXE-0080

Material: Laminated Particle Board, MDF, Multiplex

ABS Edge Banding

Can be produced according to the customer's need

**Dimensions: Customer's need**



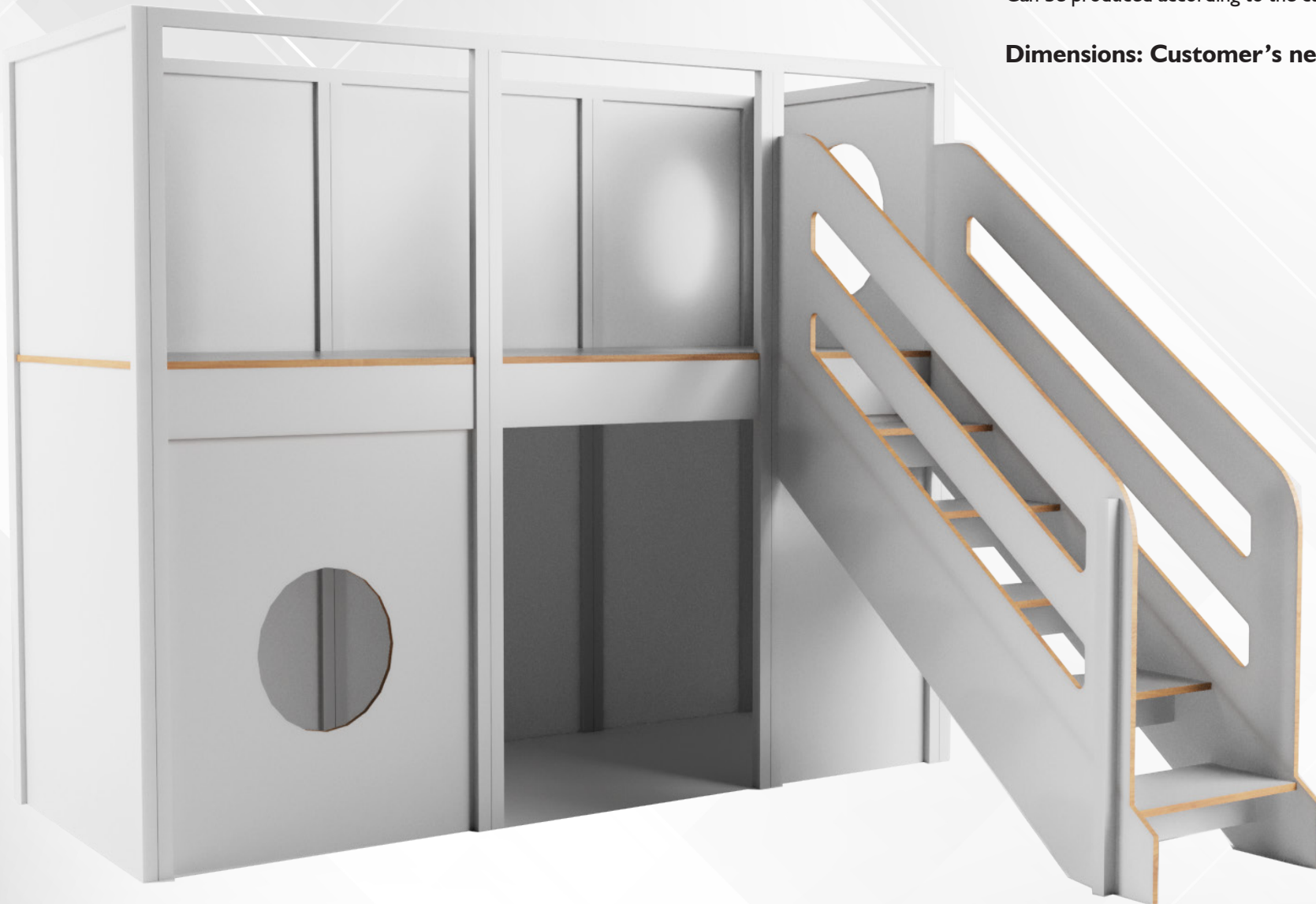
Design Code: DAAXE-008I

Material: Laminated Particle Board, MDF, Multiplex

ABS Edge Banding

Can be produced according to the customer's need

**Dimensions: Customer's need**



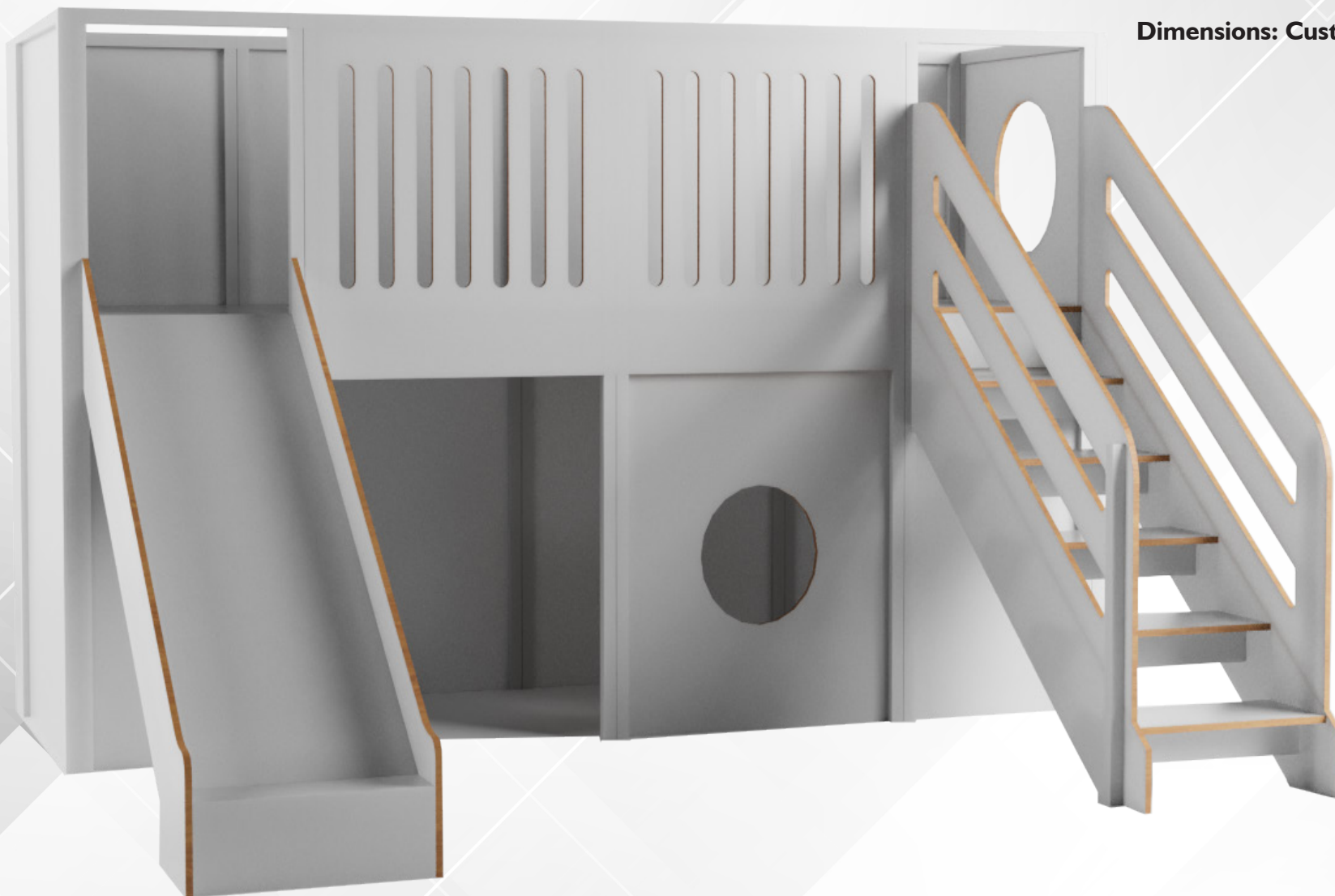


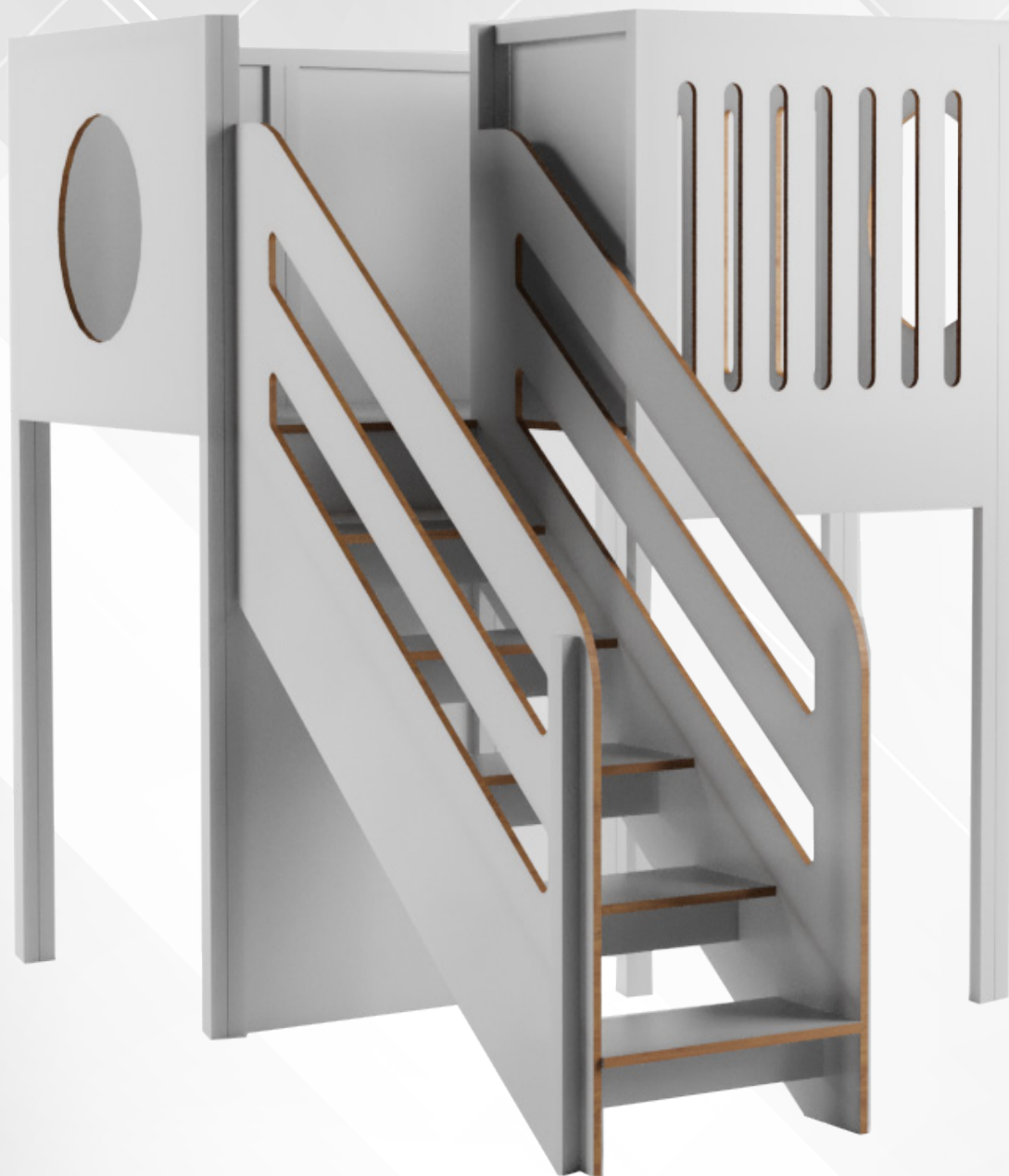
Design Code: DAAXE-0082

Material: Laminated Particle Board, MDF, Multiplex  
ABS Edge Banding

Can be produced according to the customer's need

**Dimensions: Customer's need**





Design Code: DAAXE-0083

Material: Laminated Particle Board, MDF, Multiplex

ABS Edge Banding

Can be produced according to the customer's need

**Dimensions: Customer's need**



Design Code: DAAXE-0084

Material: Laminated Particle Board, MDF, Multiplex

ABS Edge Banding

Can be produced according to the customer's need

**Dimensions: Customer's need**



# PERSONALISED COSTUMER PROJECTS















